

DS 80 series

A) DS 80 MDW (220/300 Nm) with torque transducer



Type	Max. torque Nm	Application area Nm	Max. speed rpm	Angle resolution Degree [°]	Article number
DS 80 / 220 MDW	220	44 – 220	320	0,1	DS-2800022
DS 80 / 300 MDW	300	60 – 300	320	0,1	DS-2800030

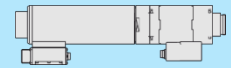
Torque accuracy 0,5 %, torque tolerance better 5 % according to ISO 5393

B) DS 80 MDW (420/500/600 Nm) with torque transducer Booster gear unit



Type	Max. torque Nm	Application area Nm	Max. speed rpm	Angle resolution Degree [°]	Article number
DS 80 / 420 MDW	420	84 – 420	160	0,1	DS-2800042
DS 80 / 500 MDW	500	100 – 500	160	0,1	DS-2800050
DS 80 / 600 MDW	600	120 – 600	160	0,1	DS-2800060

Torque accuracy 0,5 %, torque tolerance better 5 % according to ISO 5393

C) DS 80 SA (220/300 Nm) without torque transducer

Type	Max. torque Nm	Application area Nm	Max. speed rpm	Angle resolution Degree [°]	Article number
DS 80 / 220 SA	220	44 – 220	320	1,2	DS-2801022
DS 80 / 300 SA	300	60 – 300	320	1,2	DS-2801030

Torque accuracy 5 %

**D) DS 80 SA (420/500/600 Nm) without torque transducer
Booster gear unit**

Type	Max. torque Nm	Application area Nm	Max. speed rpm	Angle resolution Degree [°]	Article number
DS 80 / 420 SA	420	84 – 420	160	1,0	DS-2801042
DS 80 / 500 SA	500	100 – 500	160	1,0	DS-2801050
DS 80 / 600 SA	600	120 – 600	160	1,0	DS-2801060

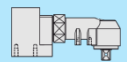
Torque accuracy 5 %

E) Motor offset

Type	Article number
Motor offset V2	DS-2803005

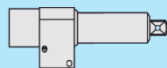
F) Mounting flange

Type	Article number
Mounting flange	DS-2803000

G) Angle head

Nutrunner MDW / SA	Max. speed rpm	Type	Article number
DS 80 / 220 WA	200	WA (3/4")	DS-2803010

Torque tolerance better 8 % according to ISO 5393

**H) Spring output with self start,
square drive 3/4"**

Spring deflexion	Article number
50 mm	DS-2803050
70 mm	DS-2803055
100 mm	DS-2803065
150 mm	DS-2803070

**I) Spring output with
square drive 3/4"**

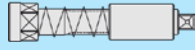
Spring deflexion	Article number
50 mm	DS-2803030
70 mm	DS-2803035
100 mm	DS-2803040
150 mm	DS-2803045

J) Output offset with stump output, square drive 1"

Type	Article number
Output offset V1 ST	DS-2803015

K) Output offset (for using with spring output)

Type	Article number
Output offset V1 (3K)	DS-2803020

L) Spring output with square drive 1" (for output offset)

Type	Article number
Spring output 50 mm (3K)	DS-2803075

M) Stump output with square drive 3/4"

Type	Article number
Stump output ST	DS-2803025

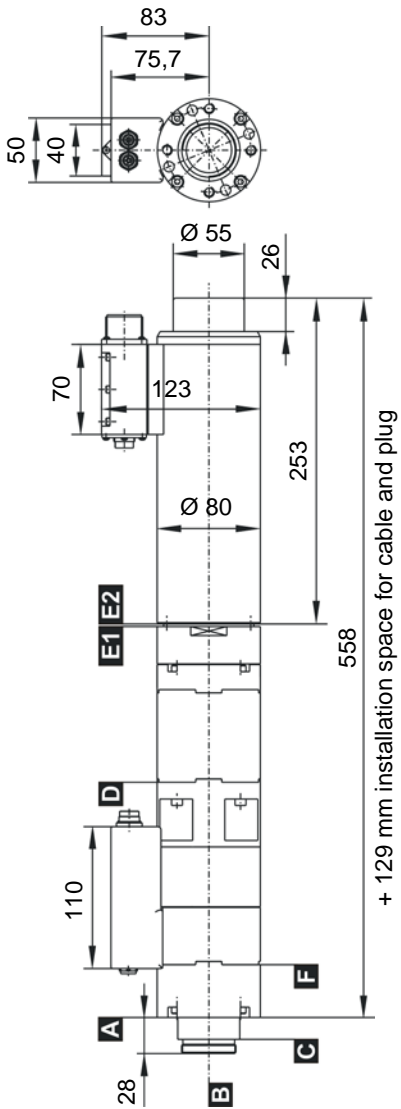
Cable set

Cables for interconnection between nutrunner and control system

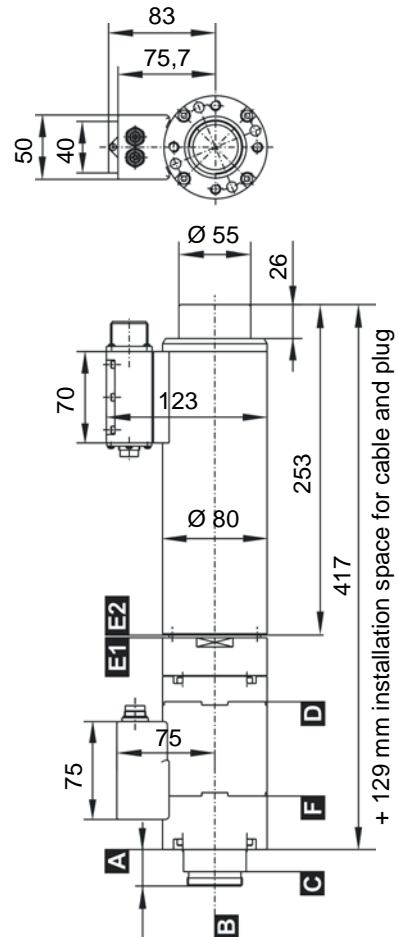
Type	Cable length	Article number
Cable set DS80 / QMP100/140 / SMP500 DSP05	5 m	MK-1009005
Cable set DS80 / QMP100/140 / SMP500 DSP10	10 m	MK-1009010
Cable set DS80 / QMP100/140 / SMP500 DSP15	15 m	MK-1009015
Cable set DS80 / QMP100/140 / SMP500 DSP05 - with shielding	5 m	MK-1009105
Cable set DS80 / QMP100/140 / SMP500 DSP10 - with shielding	10 m	MK-1009110
Cable set DS80 / QMP100/140 / SMP500 DSP15 - with shielding	15 m	MK-1009115

Technical drawings DS 80 series

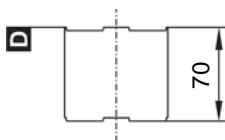
DS 80 MDW (220/300 Nm)



DS 80 SA (220/300 Nm)

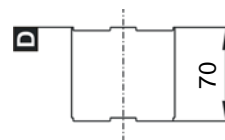


DS 80 MDW (420/500/600 Nm)



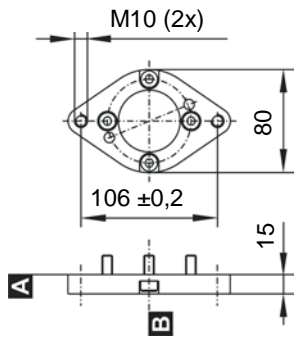
Additional
gear stage
(Booster gear unit)

DS 80 SA (420/500/600 Nm)

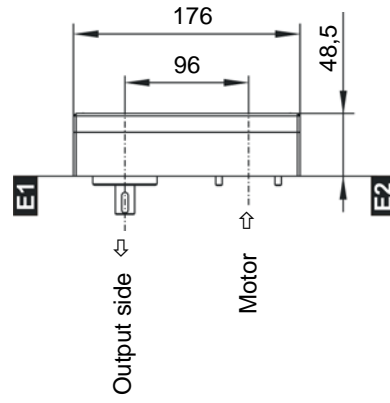


Additional
gear stage
(Booster gear unit)

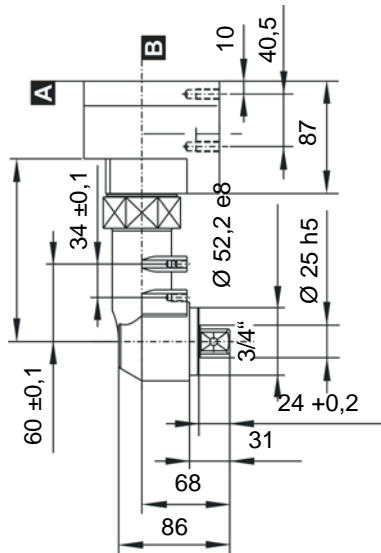
Mounting flange



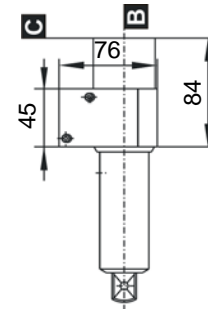
Output offset



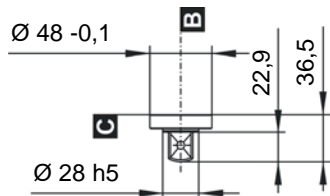
Angle head



Self start

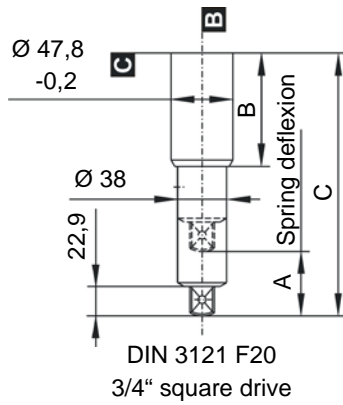


Stump output 3/4" square drive

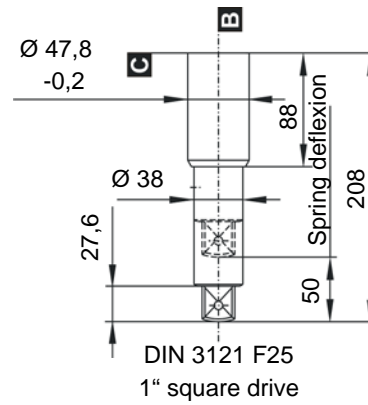


DIN 3121 F20
3/4" square drive

Spring output 3/4" square drive

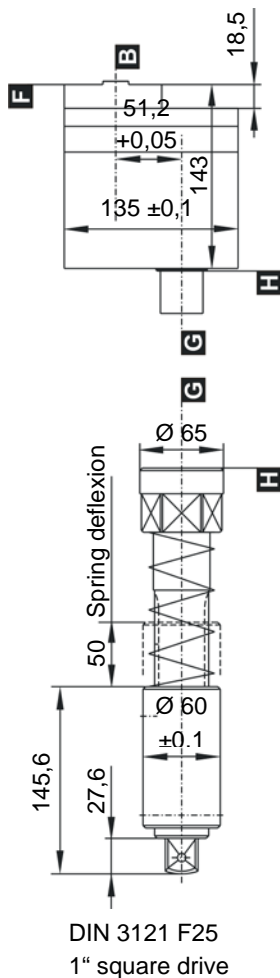


Spring output 1" square drive



Type (spring deflexion)	A mm	B mm	C mm
F50	50	88	204
F70	70	130	268
F100	100	152	321,5
F150	150	212,2	432

Output offset (for using with spring output)



Output offset with stump output

