



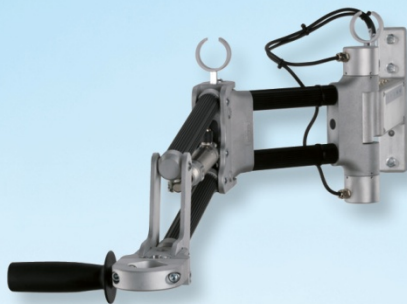
POSI 1 GG-40



POSI 1 GG-150



POSI 1 GG-300



POSI 2



PosiControl



PosiControl4

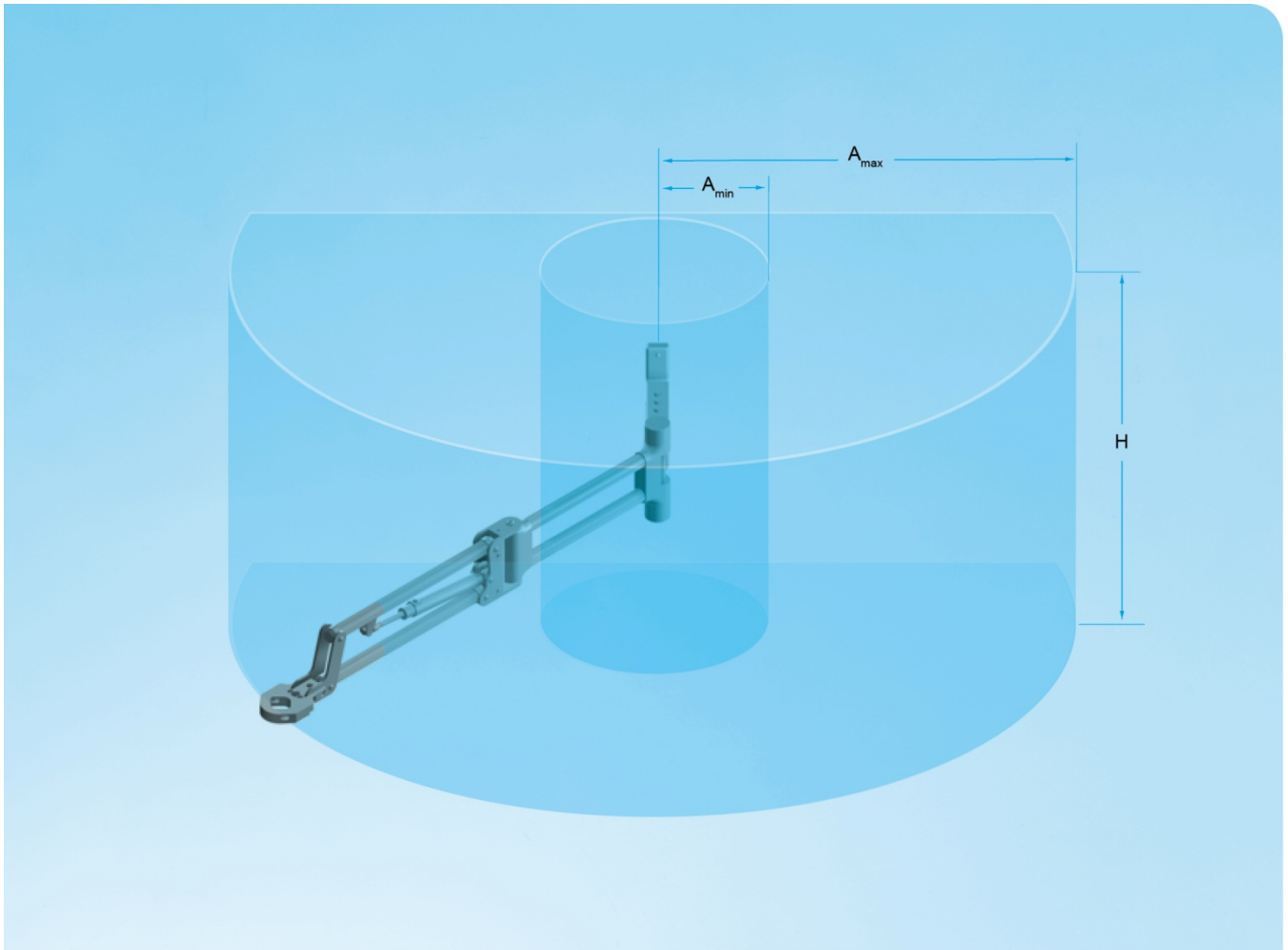
HANDLING SYSTEMS

POSI 1 Handling stand – GG series

Base out of aluminium die casting, rods out of stainless steel. Ears for the cable guide are integrated. Weight counterbalance via adjustable balancer. Universal tool bracket with three threaded holes for assembly of handles. The fixing is made by the stand with three fixing holes or by the space to be clamped.

POSI 2 Handling swivel arm

As basis the POSI 2 has a mounting flange, parallel motions out of drawn aluminium, pneumatic cylinder for the weight counterbalance, guidances and mounting surfaces out of aluminium as well as articulated joints (ball bearing guided) out of stainless steel. The tool bracket is exchangeable. The result out of the combination of stainless steel and aluminium is a robust and still very light construction.



Handling swivel arm POSI 2

POSI 2 swivel arms are available with or without position monitoring. The monitoring of the working positions is made in the XY coordinates with absolute encoder (theoretical possible positioning resolution < 0,2 mm in a stiff system).

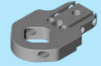
POSI 2 Swivel arm long execution

Type	with position control XY	without position control
Max. torque	40 Nm	40 Nm
Max. tool weight	3,5 kg	3,5 kg
Min. stroke A_{min}	555 mm	555 mm
Max. stroke A_{max}	915 mm	915 mm
Lift height working area H	530 mm	530 mm
Article number	DSM-600601	DSM-600600

POSI 2 Swivel arm short execution

Type	with position control XY	without position control
Max. torque	40 Nm	40 Nm
Max. tool weight	3,5 kg	3,5 kg
Min. stroke A_{min}	405 mm	405 mm
Max. stroke A_{max}	610 mm	610 mm
Lift height working area H	230 mm	230 mm
Article number	DSM-600615	DSM-600614

POSI 2 Tool fitting



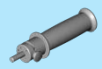
Type	Article number
Universal tool fitting for tools with diameter from 36 up to 42 mm	DSM-600660
Tool fitting for DS 34 / DS 44	DSM-600662
Tool fitting for DS 57	DSM-600665

POSI 2 Ergo handle



Type	Article number
Ergo handle with holding device	DSM-600253

POSI 2 Ergo handle with start button



Type	Article number
Ergo handle with start button	DSM-600257

POSI 2 Double handle with start buttons



Type	Article number
Double handle with start buttons	DSM-600258

POSI 2 Self-starter handle for DS 44

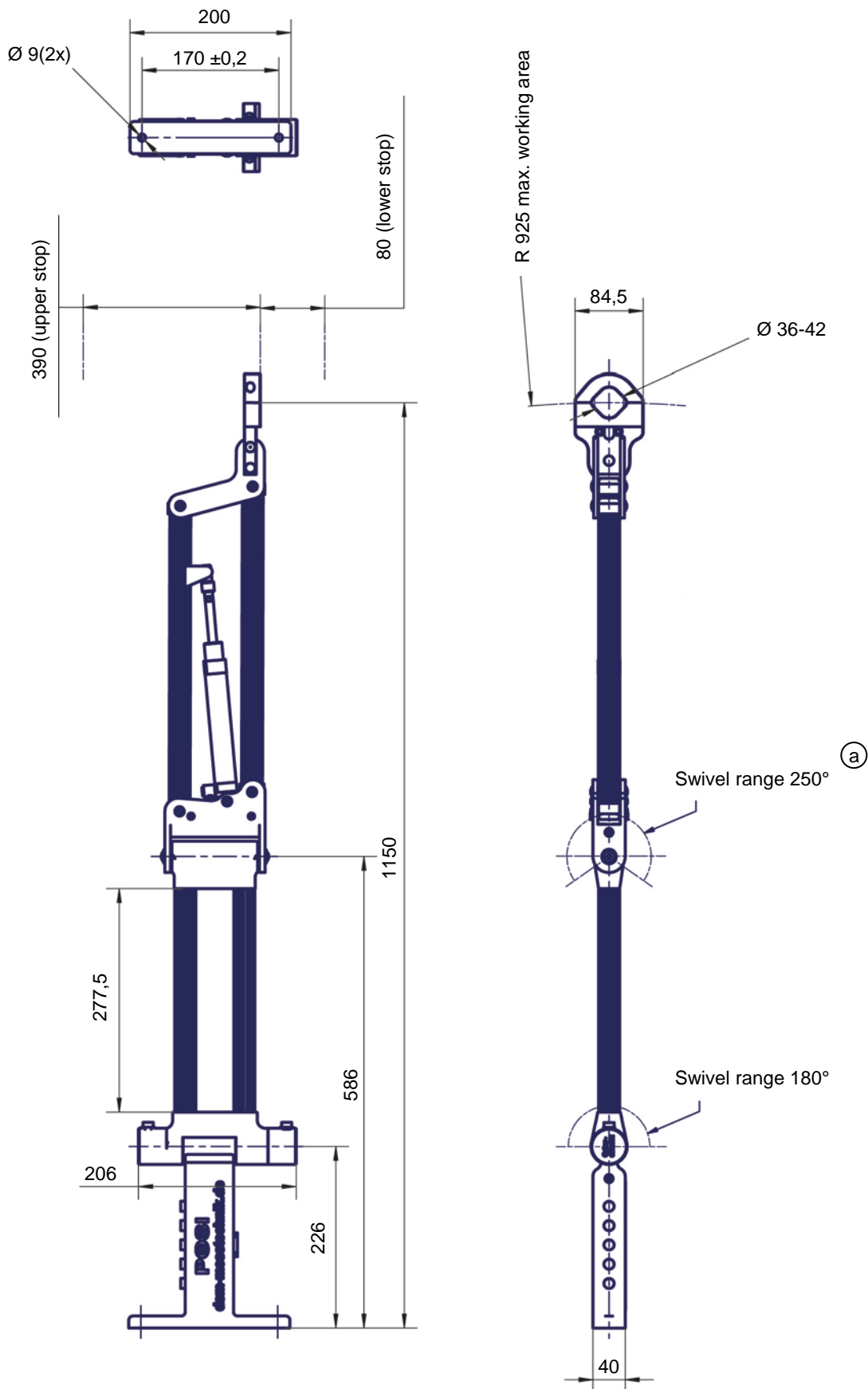


Type	Article number
Self-starter handle for DS 44	DSM-440210

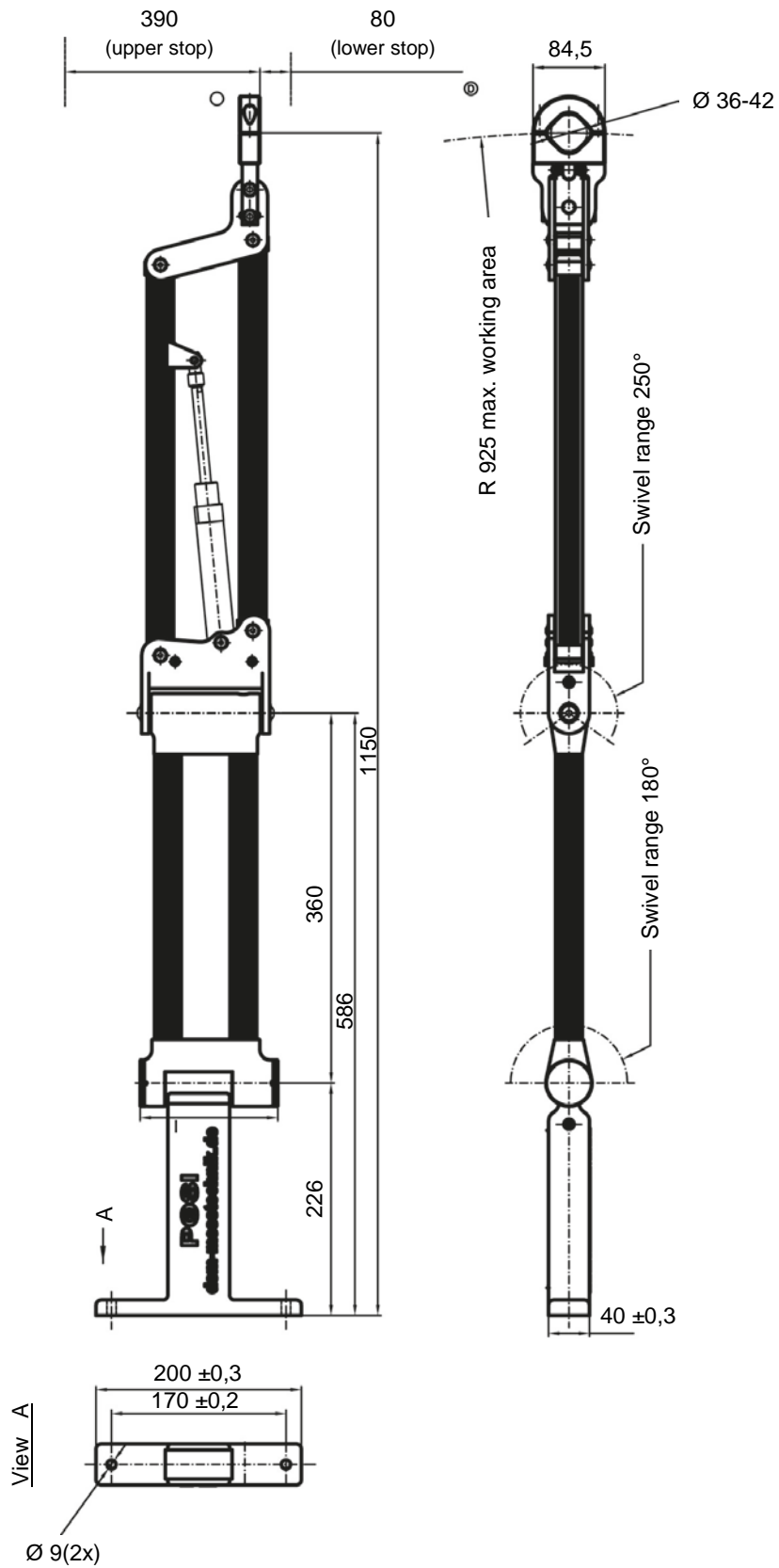
POSI 2 Interconnecting cable

Type	Cable length	Article number
Cable for interconnection between transmitter-sensoric XY and PosiControl	3 m	DSM-600650
Cable for interconnection between transmitter-sensoric XY and PosiControl4	3 m	DSM-600658

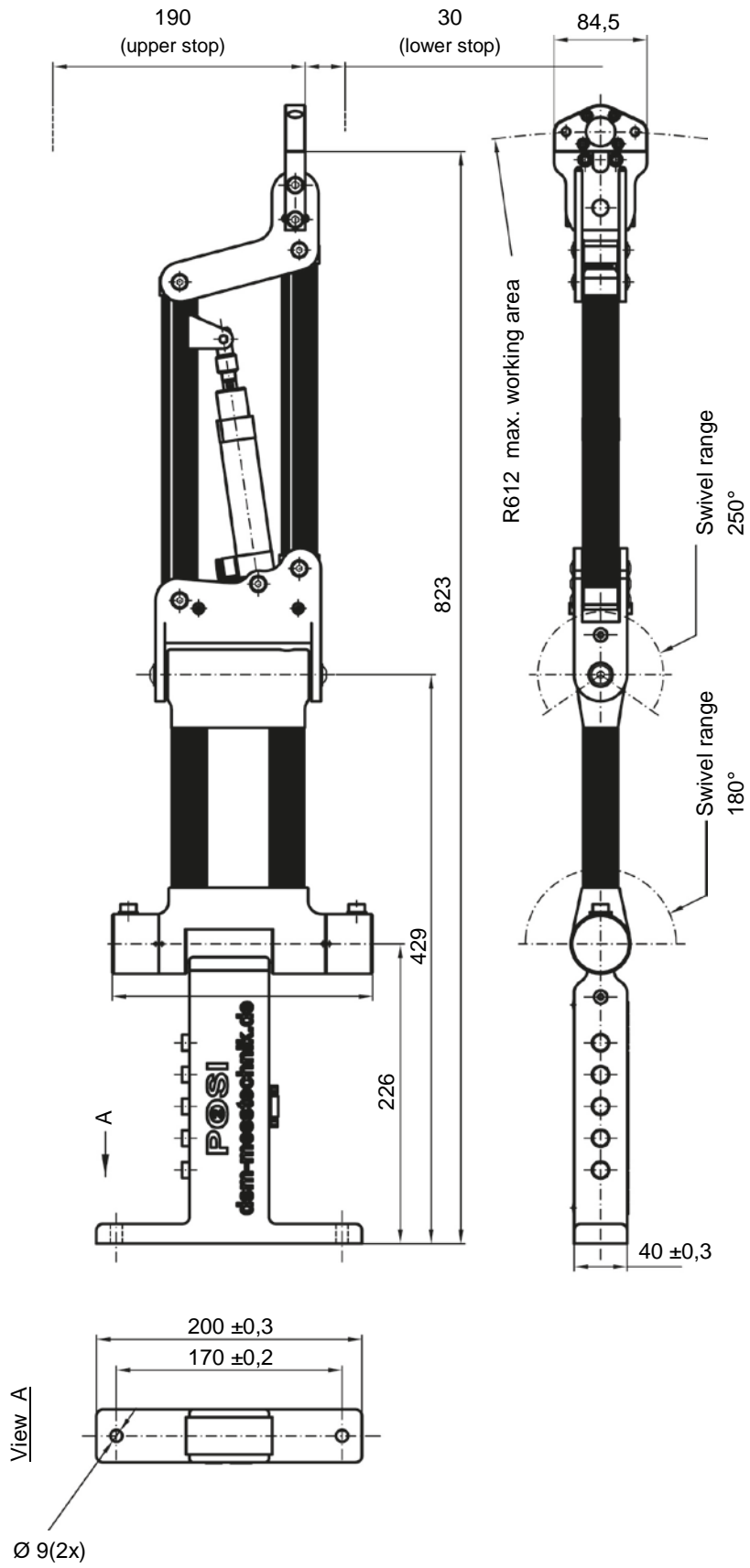
Swivel arm long execution
with position control XY



Swivel arm long execution
without position control



Swivel arm short execution
with position control XY



Swivel arm short execution
without position control

